

REA CW Series



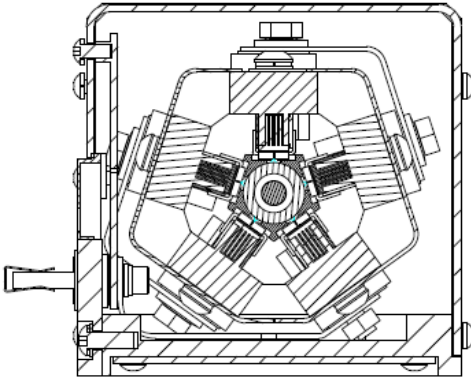
Product Overview

DPSS Nd:YAG Laser Gain Modules

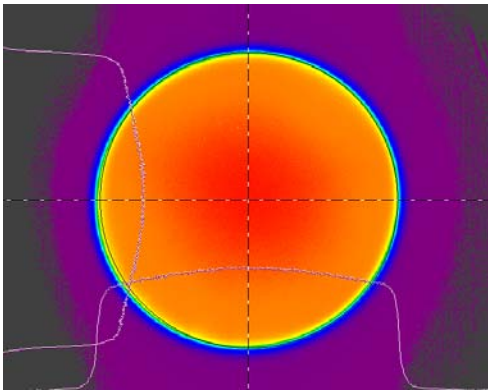
Product Definition

The REA CW family of diode pumped solid-state gain modules delivers the reliability and performance of diode pumping to high power industrial and scientific laser systems. Offering various rod sizes and variable bar counts and types, the REA CW provides power levels up to 550 Watts in a simple, compact, and affordable package.

Pump Symmetry

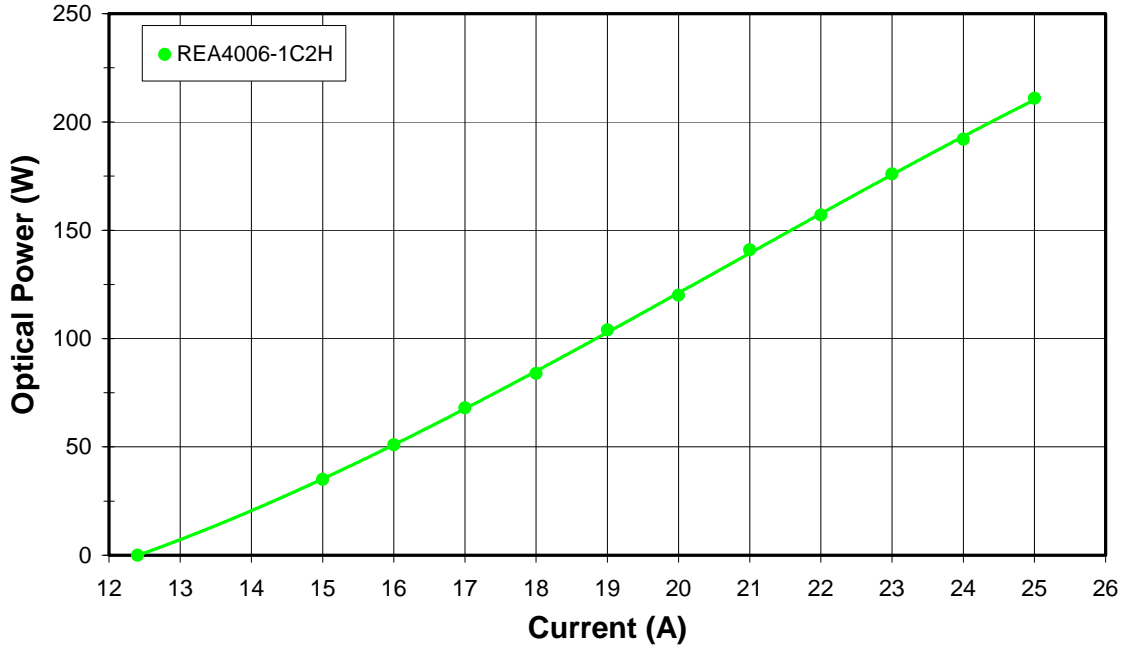


Relay Image of Fluorescence



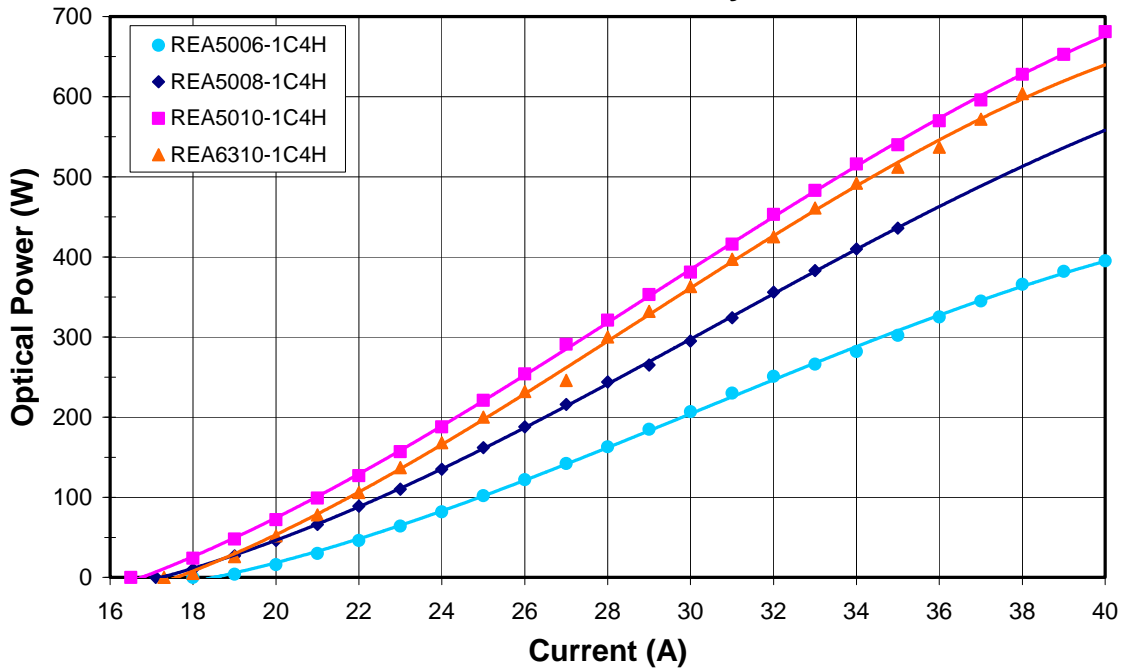
5mm x 146mm rod, 0.6% doped Nd:YAG

REA CW Power (20W Bar) Standard 280mm Cavity



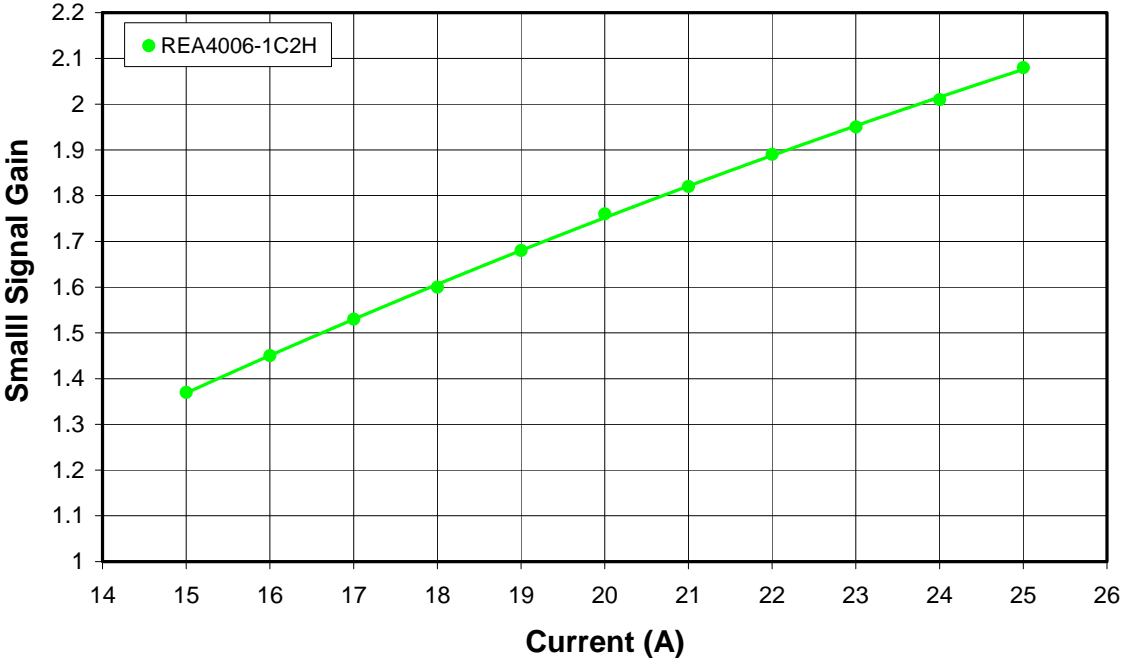
Note: All curves are typical beginning of life performance curves.

REA CW Power (40W Bar) Standard 280mm Cavity



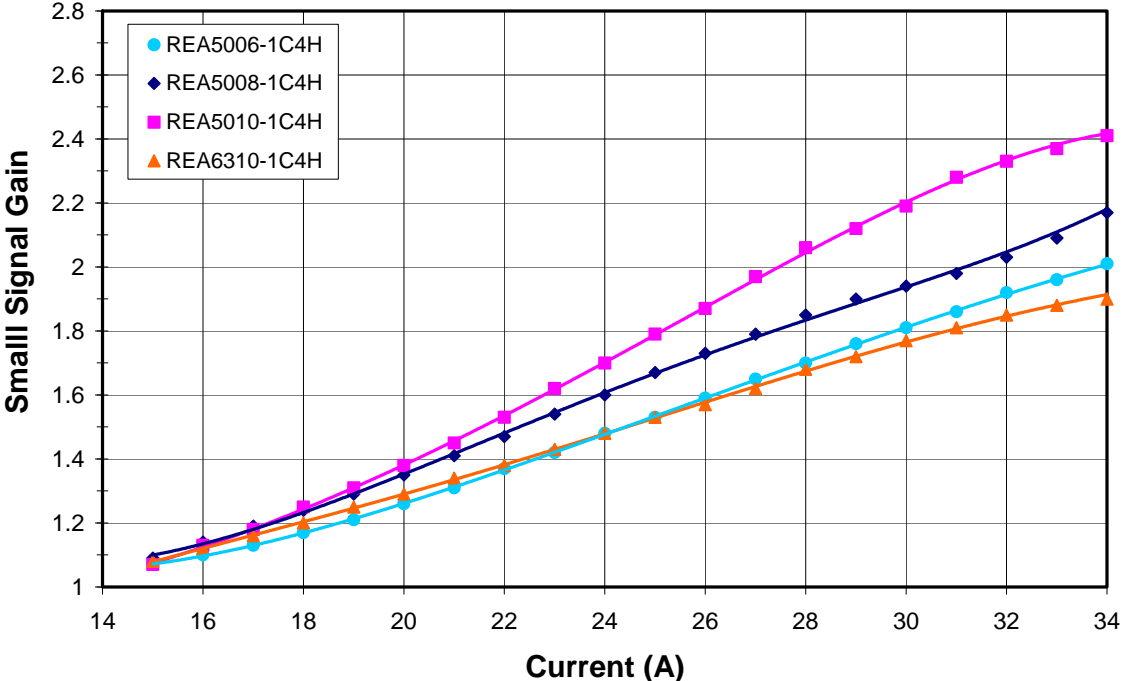
Note: All curves are typical beginning of life performance curves.

REA Small Signal Gain (20W Bar)



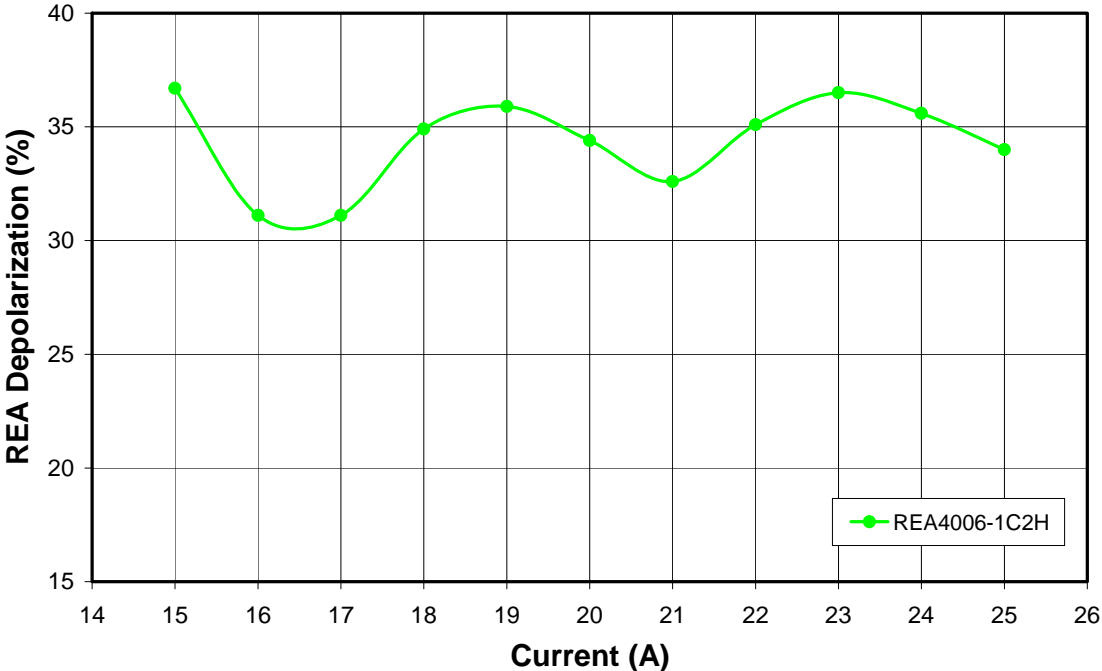
Note: All curves are typical beginning of life performance curves

REA Small Signal Gain (40W Bar)



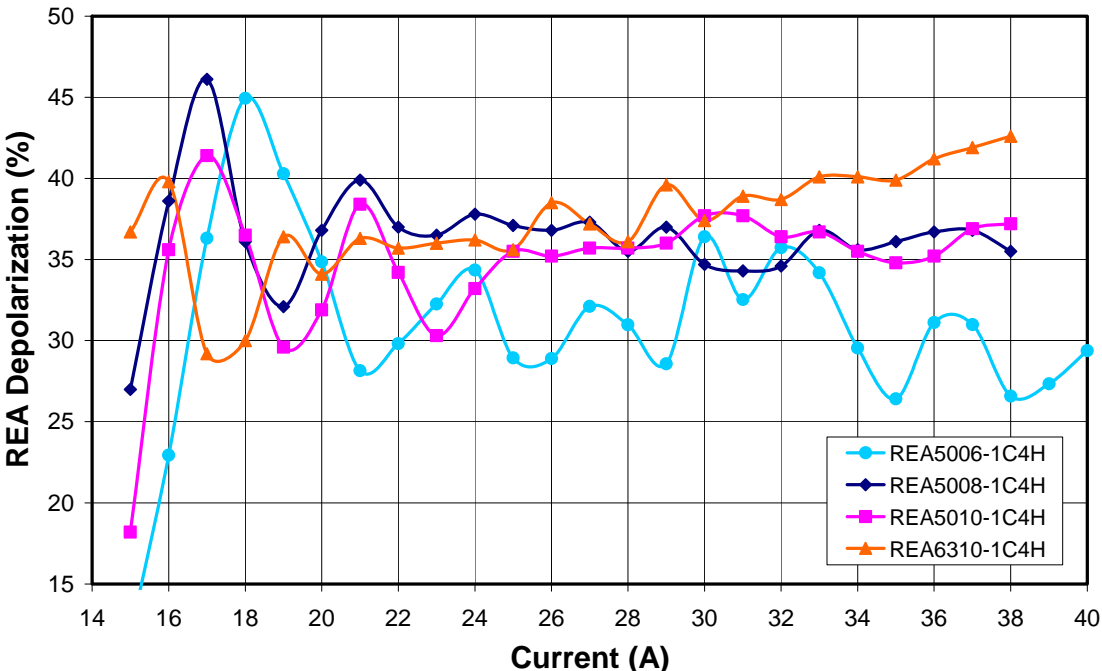
Note: All curves are typical beginning of life performance curves

REA Depolarization (20W Bar)



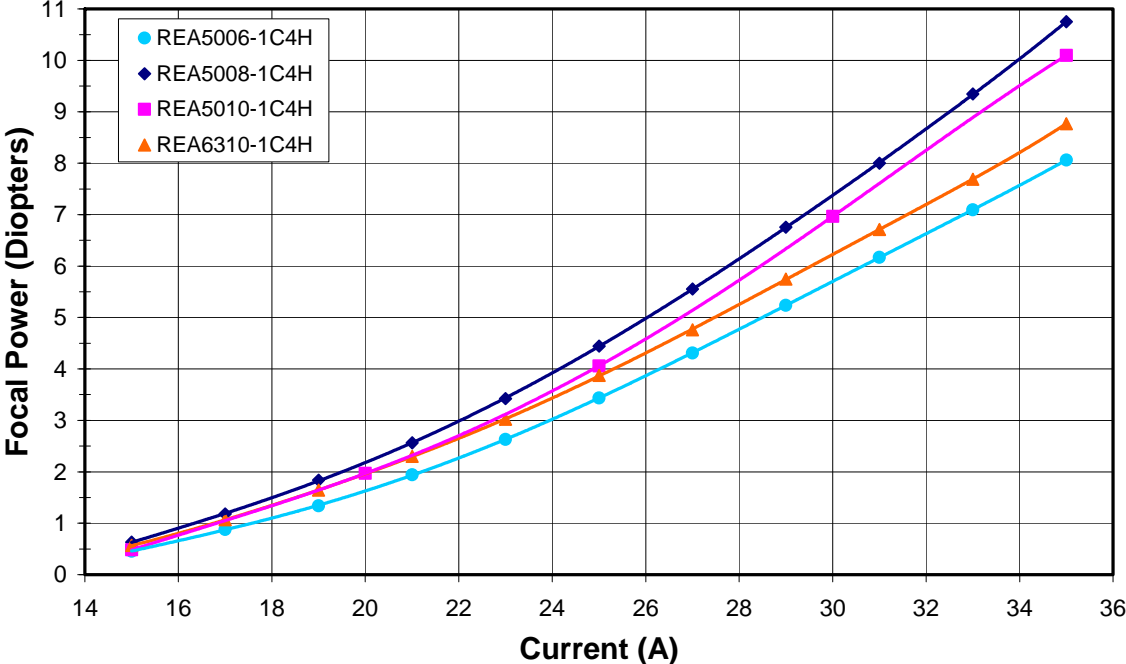
Note: All curves are typical beginning of life performance curves

REA Depolarization (40W Bar)



Note: All curves are typical beginning of life performance curves

REA Focal Power (40W Bar)



Note: All curves are typical beginning of life performance curves. Data obtained with a Shack Hartmann wavefront sensor.